





About Us

“

We wish to introduce ourselves as SPA CARE. Spa Care is one of the premium solution providers serving for hospitality and tourism industry. Started in year 2013 with only few products in its range, SPA CARE has emerged as a complete solution provider with a very strong reputation for its products based on innovating concepts, reliability, cost effective yet technologically advanced. Within a short span of time, SPA CARE has built an admirable relationship not just with its clients but with suppliers as well.

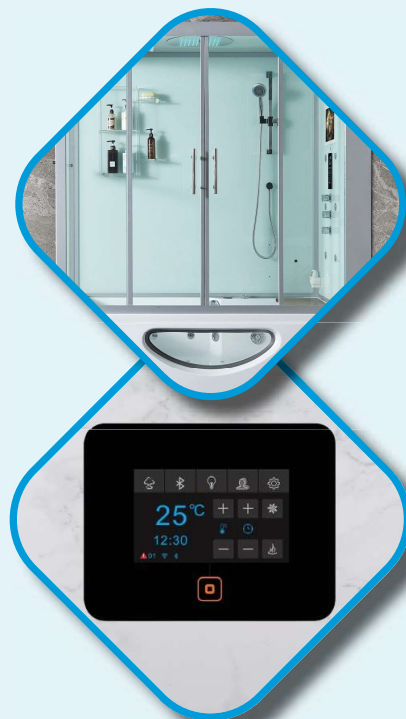
SPA CARE provide solutions to all types of, small to big, properties in hotel and tourism industry ranging from hotels to resorts, restaurants to catering companies to entertainment outlets throughout India. To provide most effective and timely services to our clients, we have our regional offices in Hyderabad, Tamil Nadu with the northern headquarters in New-Delhi.

”

Steam Bath

- Model : SCST-101/102

KW Rating	Room Vol. CU.Ft	Supply Voltage, 50Hz	Phase	MCB Amps Rating	MCB Type	Wire size (mm)	Dimension
4.5	80-100	230	Single	32A	DP	4	22" X 6" X 15"
6	120-140	230	Single	40A	DP	4	25" X 7" X 15"
9	180-200	415	Three	40A	TPN	4	27" X 10" X 19"
12	240-270	415	Three	63A	TPN	6	27" X 10" X 19"
15	300-300	415	Three	63A	TPN	6	30" X 13" X 23"
18	300-400	415	Three	80A	TPN	6	30" X 13" X 23"



Sauna Bath



- Model : SCSN-101

KW Rating	Room Vol. CU.Ft	Supply Voltage, 50Hz	Phase	MCB Amps Rating	MCB Type	Wire size (mm)	Dimension
4.5	135-500	230	Single	32A	DP	4	15" X 10" X 20"
6	180-200	230	Single	40A	DP	4	15" X 10" X 20"
9	270-300	415	Three	40A	TPN	4	15" X 10" X 20"
12	370-400	415	Three	50A	TPN	6	15" X 10" X 20"
15	450-500	415	Three	63A	TPN	6	15" X 10" X 20"
18	550-600	415	Three	80A	TPN	6	20" X 20" X 20"



Ice Flake

- Model : SC-120
- Kg/24h : 120kg
- Bin : D105-D155
- Dimensions : W 564/D 536/ H 531
- Voltage : 220-240 V – 1/50Hz



- Model : SC-200
- Kg/24h : 200kg
- Bin : D105-D155
- Dimensions : W 564/D 536/ H 531
- Voltage : 220-240 V – 1/50Hz





• Model : SCJ-1001



• Model : SCJ-1002

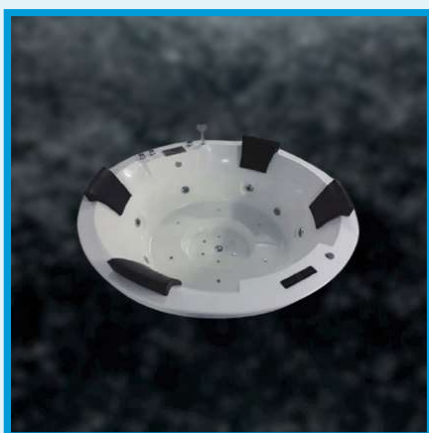


• Model : SCJ-1003

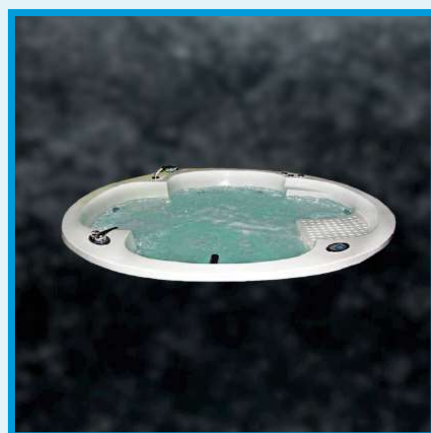
- Size: (6 x 4.3) with Front Panel/Stainless still Stand
- Whirlpool Pump 1 H.P. 1-Pcs 6-Big Jet
- 2 Microjet Set
- Bubble Bath Jet 12-Pcs. Air Blower AP 300(ABS)
- Water Light (LED) 1 piece
- F.M. with control panel
- Pop-Up-Waste
- Head Rest 2 pcs
- Bath tub Filter
- Online Heater (2KW)



• Model : SCJ-1004



• Model : SCJ-1005



• Model : SCJ-1006

Hotel RFID Lock



- Model : SCL-101, SCL-102, SCL-103, SCL-104
- Induction operating frequency : 125 KHz or 13.56MHz
- Applicable card : T5557, EM4305 Card, M1 Card
- Voltage : Four sections of 1.5V alkaline batteries
- Alarm Voltage : < 4.8 V
- Static power consumption : < 10 microamps
- Dynamic power consumption : < 200 microamps
- Temperature : -20 °C to 50 °C
- Humidity : < 95 %
- Antistatic : > 15,000 V

Hotel Minibar



• Model : SCM-40sd

Model	SCM-30	SCM-40	SCM-60
Cooling Method	Absorption	Absorption	Absorption
Storage Temp.	0-12	0-12	0-12
Input Power(W)	65	65	65
Energy consumption	0.9	0.9	0.9
Validity Capacity(L)	30	40	60
Voltage(V)	AC220/110	AC220/110	AC220/110
Type of controller	Digital	Digital	Digital
Type of Door Seal	Removable	Removable	Removable
Net/gross weight(kg)	16/18	16/18	16/18
Shape size(W*D*H)mm	400*420*521	400*420*521	400*420*521
Packing size(W*D*H)mm	460*450*460	460*500*560	530*510*600



• Model : SCM-40gd

Model	SCM-30	SCM-40	SCM-60
Cooling Method	Absorption	Absorption	Absorption
Storage Temp.	0-12	0-12	0-12
Input Power(W)	65	65	65
Energy consumption	0.9	0.9	0.9
Validity Capacity(L)	30	40	60
Voltage(V)	AC220/110	AC220/110	AC220/110
Type of controller	Digital	Digital	Digital
Type of Door Seal	Removable	Removable	Removable
Net/gross weight(kg)	16/18	16/18	16/18
Shape size(W*D*H)mm	400*420*517	400*420*517	400*420*521
Packing size(W*D*H)mm	460*450*460	460*500*560	530*510*600



• Model : SCM-45a

- Model : SCM-45A
- Capacity : 45L
- System : Thermo-electric, Semi-conductor system
- Power Rate : 80 W
- Voltage : 220-240V, 50/60Hz
- Type : Drawer Style
- Ctn Size : 1pc/ctn, 440L*440W*550Hmm
- N.W/G.W : 9.5Kgs/ 11kgs
- Recommendations : 4-5 star hotels
- Certificates : CE

Hotel Room Safe



SCS-101

- Model: SCS-101
- 5 MM Cold-Rolled Steel Door
- Two 3/4 inch (19MM) Diameter Steel Locking Bolts
- Scratch- Resistant Powder Coated Finish
- Material: Cold-Rolled Steel
- Size: H200*L430*D370mm
- Working Voltage: DC6V or 4 AA Alkaline batteries



SCS-102

- Model: SCS-102
- 5 MM Cold-Rolled Steel Door
- Two 3/4 inch (19MM) Diameter Steel Locking Bolts
- Scratch- Resistant Powder Coated Finish
- Material: Cold-Rolled Steel
- Size: L430mm*D370mm*H200mm
- Working Voltage: DC6V or 4 AA Alkaline batteries



SCS-103

- Model: SCS-103
- 5 MM Cold-Rolled Steel Door
- Two 3/4 inch (19MM) Diameter Steel Locking Bolts
- Scratch- Resistant Powder Coated Finish
- Material: Cold-Rolled Steel
- Size: L430mm*D370mm*H200mm
- Working Voltage: DC6V or 4 AA Alkaline batteries

Electric Kettle



- Model Name : SCEK-101
- Capacity : 0.8L
- Material : SS304 Stainless Steel
- Power Rate : 1000~1200W
- Voltage : 220-240V, 50/60Hz
- Controller : HULADE Controller
- Ctn Size : 12pcs/ctn, 46.5*35.5*41cm
- N.W/G.W : 10kgs/12.0kgs



- Model Name : SCEK-102
- Capacity : 0.8L
- Material : SS304 Stainless Steel
- Power Rate : 1000W
- Voltage : 220-240V, 50/60Hz
- Controller : STRIX Controller
- Ctn Size : 12pcs/ctn, 56.5*34.5*43cm
- N.W/G.W : 12.0kgs/13.50kgs



- Model Name : SCEK-103
- Capacity : 0.8L
- Material : SS304 Stainless Steel
- Power Rate : 800W
- Voltage : 220-240V, 50/60Hz
- Controller : STRIX Controller
- Ctn Size : 12pcs/ctn, 56.5*34.5*43cm
- N.W/G.W : 12.1kgs/13.50kgs



- Model Name : SCEK-104
- Capacity : 1.2L
- Material : SS304 Stainless Steel
- Power Rate : 1000W
- Voltage : 220-240V, 50/60Hz
- Controller : STRIX Controller
- Ctn Size : 12pcs/ctn, 56.5*34.5*43cm
- N.W/G.W : 12.1kgs/13.50kgs

Bathroom Mirror

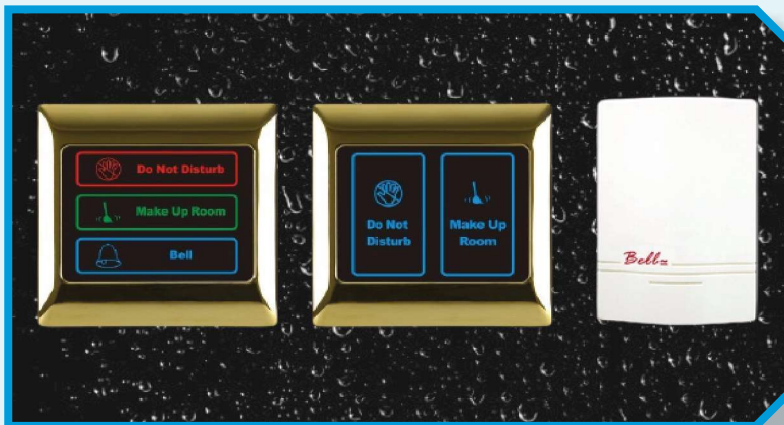


- Model Name : SCMM-101, SCMM-102, SCMM-103, SCMM-104
- Usage : For Hotel Bathroom use
- Type : Cosmetic Mirror
- Craft : Casting and handmade
- Plated color : Golden/silver/rhodium/nickel/anti-silver
- Finishing : Iron chrome or other required surface finish
- Material : Copper
- Features : 3 x magnification , single side
- Type : With LED light
- Voltage : 110V/220V

Hotel Doorbell



- Model Name : SCDB-101, SCDB-102
- Panel Material : Acrylic / Tempered Glass
- Operating Temperature : 15 C ~ 60 C
- Voltage : A/C 220V
- Power Consumption(24h) : <1W
- Service Life : Total Unlimited Use
- Relay Contacts : 100,000 Times
- Bottom box Installation : 86*86mm Bottom Box



Key Card Switch

- Model Name : SCKC-101
- Size : 85*85*42mm
- Working voltage : Alternating Current 180V-280V
- Switch Type : Suit for Temic5557/ID/EM Card Type
- Maximum current : 40A
- Maximum power : 6000W
- Delay time : 8-15 seconds
- Material : Plastic / Abs



Hotel Telephone



- Model : SCTL-101/102/103/104/105
- One-touch Button : (+10,+5,+3,+0)
- Music : Music on Hold
- Function-1 : Automatic take-up function
- Function-2 : Auto re-dial
- Ctn Size : 12pcs/ctn, 46.5*35.5*44.5cm
- N.W/G.W : 21.0kgs/ 22.0kgs

Hair Dryer

- Model : SCHD-101
- Wind Speed : 3 hot wind, 2 cool wind
- Material : ABS Plastic
- Power Rate : 1200-1600W
- Voltage : 220-240V, 50/60Hz
- Shaver Socket : Yes
- Ctn Size : 20pcs/ctn, 65x33.2x53.5cm
- N.W/G.W : 16.8kgs/ 18.3kgs

- Model : SCHD-102
- Wind Speed : 3 hot wind, 2 cool wind
- Material : ABS Plastic
- Power Rate : 1600W
- Voltage : 220-240V, 50/60Hz
- Shaver Socket : Yes
- Ctn Size : 20pcs/ctn, 65x33.2x53.5cm
- N.W/G.W : 16.8kgs/ 18.3kgs

- Model : SCHD-103
- Wind Speed : 3 hot wind, 2 cool wind
- Material : ABS Plastic
- Power Rate : 1200W
- Voltage : 220-240V, 50/60Hz
- Shaver Socket : Yes
- Ctn Size : 20pcs/ctn, 65x33.2x53.5cm
- N.W/G.W : 16.8kgs/ 18.3kgs

- Model : SCHD-104
- Wind Speed : 3 hot wind, 2 cool wind
- Material : ABS Plastic
- Power Rate : 1200W
- Voltage : 220-240V, 50/60Hz
- Shaver Socket : Yes
- Ctn Size : 20pcs/ctn, 65x33.2x53.5cm
- N.W/G.W : 16.8kgs/ 18.3kgs



Ironing Set

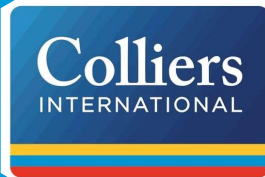


- Model : SCIR-101
- Board Size : 91*30cm
- Material : Metal
- Board Color : Silver
- Maximum height : 85cm
- Iron Size : 29.8*11.9*14.1cm
- Diameter of Legs : 22/28/32mm
- Water tank capacity : 350ml



- Model : SCIR-102
- Board Size : 91*30cm
- Material : Metal
- Board Color : Silver
- Maximum height : 85cm
- Iron Size : 28.9*12.8*14.6cm
- Diameter of Legs : 22/28/32mm
- Water tank capacity : 320ml

Our Clients



And Many More...



Corporate Office

RZ-1/316A, Mahavir Enclave, New Delhi-110045,
Delhi, India

Branch Office

Hyderabad,
India

Branch Office

Bharatpur,
Nepal



www.spacare.in

+91-9582429362, +91-9870185499, +91-11-40526575

info@spacare.in